

Alloy Cast Steel Rolls

These cast alloy steel rolls are made of high quality melted steel with arc furnace and refiner, and corresponding with advanced casting and heat treatment procedure, and have very high tensile strength and good wear-ability, toughness and resistance to fire crack.

化学成分 Chemical composition(%)

代号 Symbol	C	Si	Mn	Cr	Ni	Mo	V
CS-1	0.55-0.80	0.20-1.00	0.50-1.30	--	--	0.40-1.50	--
CS-2	0.55-0.80	0.20-1.00	0.40-1.30	0.50-1.50	0.20-1.00	0.40-1.50	--
CS-3	0.35-0.55	0.20-1.00	0.20-1.00	2.50-3.50	0.20-1.00	0.20-1.00	0.02-0.40
CS-4	0.40-0.60	0.20-1.00	1.00-1.80	1.00-2.00	0.20-1.00	1.00-1.80	
CS-5	0.95-1.20	0.20-1.00	0.70-1.50	0.50-1.50	0.50-1.50	0.40-1.50	--

物理性能 Physical Properties:

代号 Symbol	辊身硬度 Barrel Hardness HS	抗拉强度 Tensile strength MPa	延伸率 Elongation %	冲击韧性 Impact Value × 10 ⁴ J/m ²
CS-1	28-43	≥ 600	≥ 5	≥ 8
CS-2	30-45	≥ 800	≥ 5	≥ 8
CS-3	45-65	≥ 800	≥ 2	≥ 5
CS-4	45-65	≥ 800	≥ 3	≥ 4
CS-5	40-55	≥ 700	≥ 4	≥ 7



珠光体 pearlite 500X

金相组织 Microstructure:

辊身工作层金相组织为:

珠光体或回火索氏体

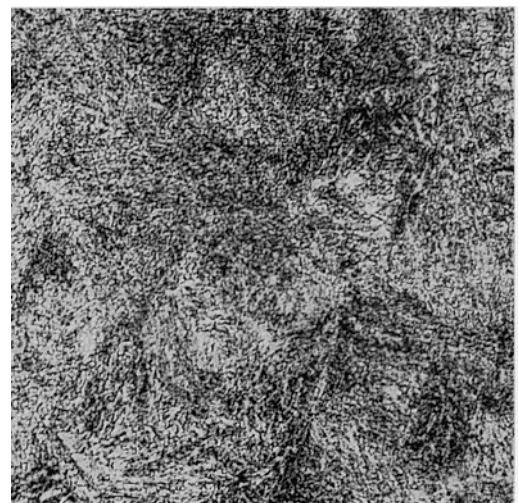
The microstructure of working layer is:

Pearlite or Temper Sorbite

用途 Application:

方、板坯初轧机，型钢粗、中轧机，带钢热连轧机，破鳞大立辊及二辊粗轧机，中板二辊粗轧机，热轧窄带钢支承辊等。

Blooming and slabbing mills, roughing and intermediate stands of section mills, vertical scale-breaking and 2-Hi roughing stands of hot strip mills, 2-Hi roughing stands of plate mills, the back-up rolls of narrow strip mills.



回火索氏体 temper sorbite 500X

承制范围 The capacity of making:

辊身直径 (mm) Diameter of barrel	辊身长度 (mm) Length of barrel	单重 (t) weight
Φ 1500(max.)	3000(max.)	60(max.)